



Milesight Release Note For CMS

Firmware Version: 2.4.0.17

Release Date: 1st December, 2022

1. Overview

Milesight, the best-in-class AIoT surveillance solution provider that manufactures products with superior image quality, exceptional flexibility and reliability for the global market, is pleased to announce the release of the new firmware version 2.4.0.17 of the Milesight CMS.

In this version, Milesight CMS has optimized various performance features such as **display speed and playback speed**, added **Camera Maintenance**, etc.

Also optimized several functions to enhance the customer experience.

2. Firmware link

Firmware	Download URL
2.4.0.17	https://drive.google.com/file/d/123bcJ5IL8VSY9OJNtNQ6V2ClindTxGtc/view?usp=share_link

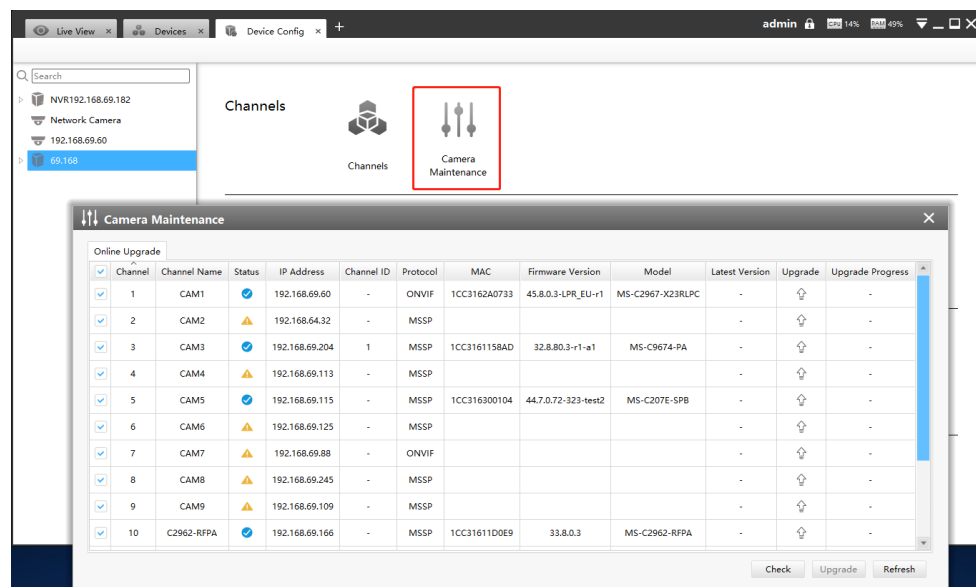
Note:

If it fails to download the firmware via clicking the link directly, please copy the link to the browser manually.

3. What's new

3.1 New Features

- 1) Add Camera Maintenance function.
- ❖ For greater convenience, the Camera Maintenance function has been added so that users can batch online upgrade the cameras of NVR on CMS.



Note:

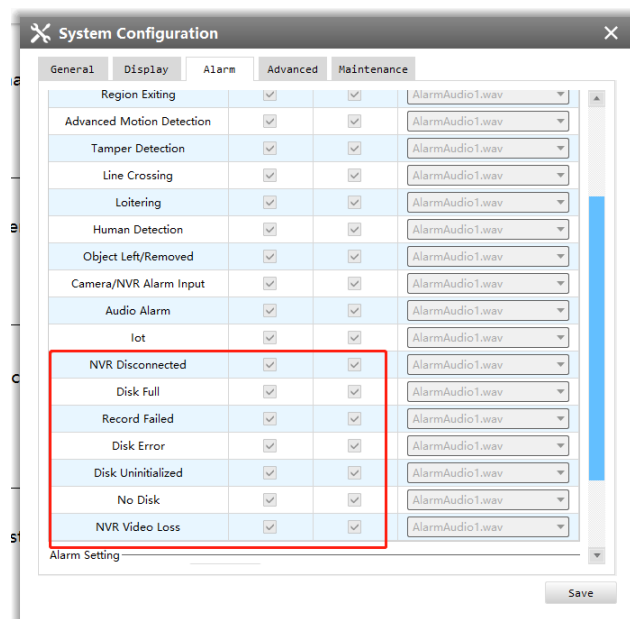
- Make sure the NVR's version is 7X.9.0.17 or above.

Firmware download link:

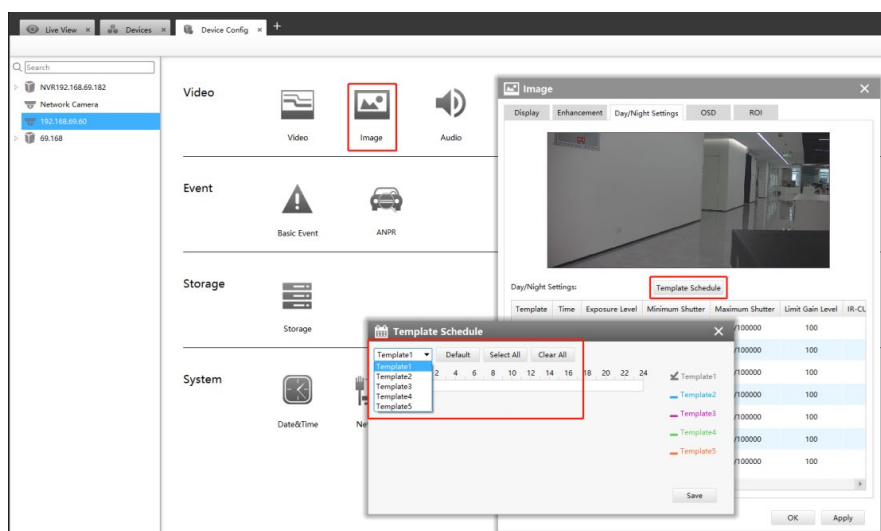
<http://www.milesight.com/support/download#firmware>

- 2) Enrich the Alarm event.
- ❖ Users can choose from a wider range of alarm scenarios in the Alarm section of the System Configuration. We add new Exception event types, including NVR Disconnected, Disk Full, Record Failed, Disk Error, Disk

Uninitialized, No Disk, and NVR Video Loss.



- 3) Compatible with some new features in XX.8.0.1 version or above of Milesight cameras.
- ❖ Compatible with Milesight camera, the Template Schedule function with Day /Night Settings is set in the Image Section for a better use.



Note:

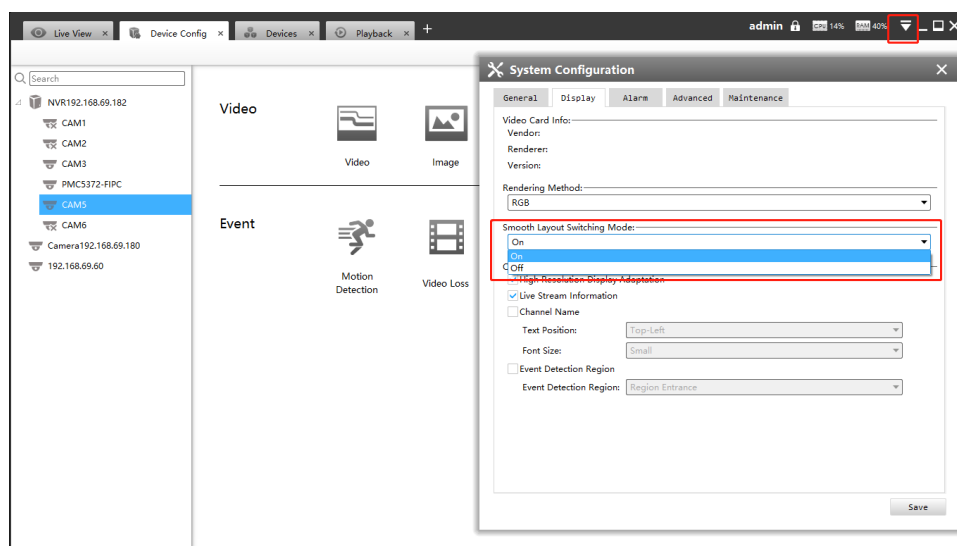
- Make sure the camera's version is XX.8.0.1 or above.

- 4) Compatible with the new camera model MS-Cxxxx-xE.

3.2 Optimizations

1) Optimize the Live View interface.

- ① Optimize the speed of display, allowing users to view more smoothly.
- ② Optimize the speed of layout switching for a better user experience.
- ❖ A new configuration item Smooth Layout Switching Mode has been added under System Configuration, users can turn on this feature to experience a more comfortable switching speed.



- ③ Optimize primary and secondary stream switching speed, allowing users to switch between streams more quickly.
- ④ Remove the Dual Stream Connection Mode in System Configuration.

2) Optimize the Playback viewing experience.

- ❖ Optimize the speed of video search, improve responsiveness when jumping between views at different points in time, users can get a better

experience in Playback function.

3) Optimize the remote downloads.

- ❖ Optimize remote download alerts to better match the actual download progress, so that users are more aware of the download progress and status.

3.3 Bug Fixes

- 1) Fix the bug that the VCA Settings of MS-Cxxxx-xPD model cannot be synchronized on the CMS.
- 2) Fix other bugs.

——**END**——